

CENTRAL COAST
SCHOOL





Page
B e . M a a e



Partnership Programme

CCGS is a member of the Singapore Chinese Education Group (SCEG), a consortium of Chinese-medium schools in Singapore. SCEG is a leading provider of Chinese-medium education in Singapore, with a rich history of over 100 years. SCEG schools are committed to providing a high-quality Chinese-medium education that is rooted in Chinese culture and values, and that is relevant to the needs of the Singaporean community.

CCGS is a member of the Singapore Chinese Education Group (SCEG), a consortium of Chinese-medium schools in Singapore. SCEG is a leading provider of Chinese-medium education in Singapore, with a rich history of over 100 years. SCEG schools are committed to providing a high-quality Chinese-medium education that is rooted in Chinese culture and values, and that is relevant to the needs of the Singaporean community.

CCGS is a member of the Singapore Chinese Education Group (SCEG), a consortium of Chinese-medium schools in Singapore. SCEG is a leading provider of Chinese-medium education in Singapore, with a rich history of over 100 years. SCEG schools are committed to providing a high-quality Chinese-medium education that is rooted in Chinese culture and values, and that is relevant to the needs of the Singaporean community.

CCGS is a member of the Singapore Chinese Education Group (SCEG), a consortium of Chinese-medium schools in Singapore. SCEG is a leading provider of Chinese-medium education in Singapore, with a rich history of over 100 years. SCEG schools are committed to providing a high-quality Chinese-medium education that is rooted in Chinese culture and values, and that is relevant to the needs of the Singaporean community.

International Learning

CCGS is a member of the Singapore Chinese Education Group (SCEG), a consortium of Chinese-medium schools in Singapore. SCEG is a leading provider of Chinese-medium education in Singapore, with a rich history of over 100 years. SCEG schools are committed to providing a high-quality Chinese-medium education that is rooted in Chinese culture and values, and that is relevant to the needs of the Singaporean community.

CCGS is a member of the Singapore Chinese Education Group (SCEG), a consortium of Chinese-medium schools in Singapore. SCEG is a leading provider of Chinese-medium education in Singapore, with a rich history of over 100 years. SCEG schools are committed to providing a high-quality Chinese-medium education that is rooted in Chinese culture and values, and that is relevant to the needs of the Singaporean community.

CCGS is a member of the Singapore Chinese Education Group (SCEG), a consortium of Chinese-medium schools in Singapore. SCEG is a leading provider of Chinese-medium education in Singapore, with a rich history of over 100 years. SCEG schools are committed to providing a high-quality Chinese-medium education that is rooted in Chinese culture and values, and that is relevant to the needs of the Singaporean community.

L... C... L... D...
...
...
...

A... F... E... A... H... G...
...
... A... E...
...
...

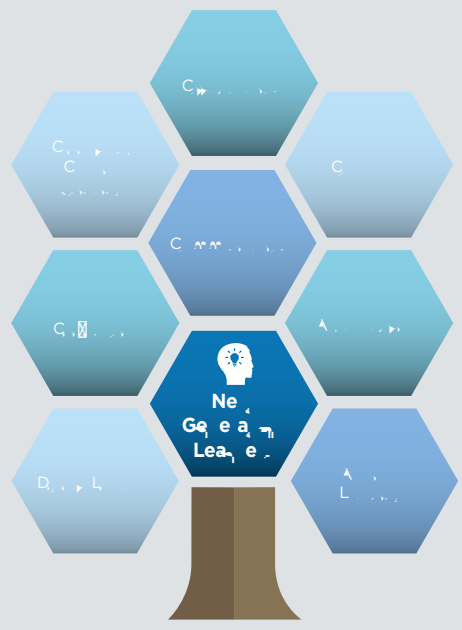
A... J... N...
G... L...
...
...
...

NEXT STEPS

D... D... L... J...
...
... J... M...
...

L...
...

O... G... B...
...





Ma

En

En

En

En

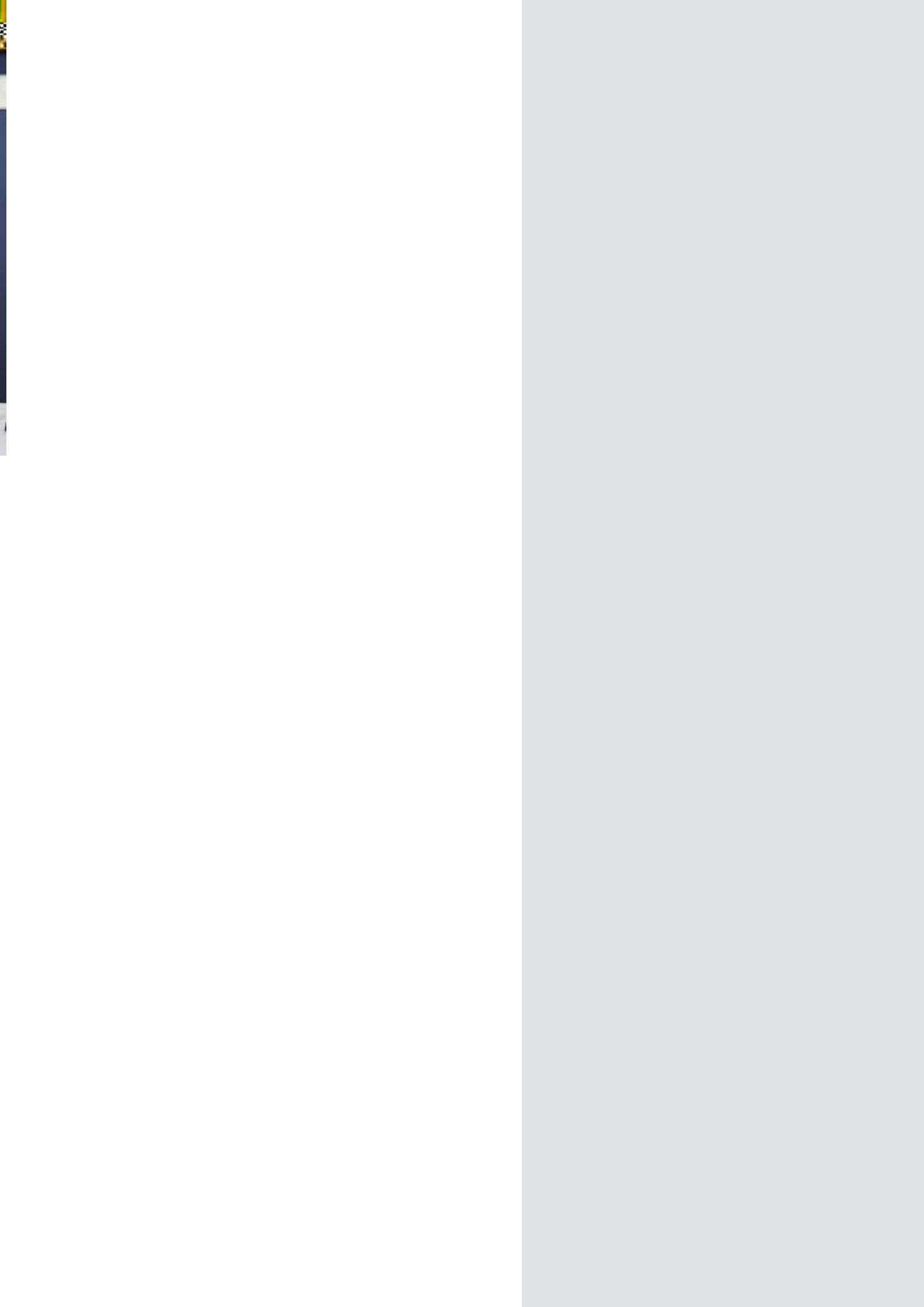
En

En

En

HSC Re.

H





Leade Lea













A             

J             

E             

A             

E             



GOAL: Increase the number of children with special educational needs and disabilities who participate in school sports and extracurricular activities.

We believe

ACHIEVEMENTS 2023

Facilities & Curriculum

Continued investment in our facilities and curriculum. We have successfully completed the renovation of our PE hall, ensuring it is fully accessible for all children. Additionally, we have introduced a range of adapted sports equipment to our PE curriculum, allowing all children to participate in physical education.

Our curriculum is designed to be inclusive and engaging for all children. We offer a variety of activities, including adapted PE, swimming, and outdoor education. We also provide support for children with special educational needs and disabilities to ensure they can fully participate in all school activities.

Targeted Support Services

We provide a range of targeted support services to ensure all children can achieve their full potential. This includes specialist teaching, learning support, and pastoral care. We also have a dedicated team of staff who provide support for children with special educational needs and disabilities. Our support services are designed to be proactive and preventative, ensuring that all children can access the curriculum and participate in school activities.

Measures

We have implemented a range of measures to ensure all children can participate in school sports and extracurricular activities. These include providing adapted equipment, offering one-to-one support, and ensuring that all activities are accessible. We also have a range of measures in place to ensure that all children can participate in school activities, including providing support for children with special educational needs and disabilities.

Success Stories

We are proud to share the success stories of our children. Many children who were previously unable to participate in school sports and extracurricular activities are now fully participating and achieving their full potential. This is a testament to the effectiveness of our inclusive approach and targeted support services.

Partnerships with external organisations have been instrumental in our success. We have worked closely with local sports clubs and charities to provide additional support and resources for our children. This has allowed us to offer a wider range of activities and ensure that all children can participate in school sports and extracurricular activities.

Our commitment to inclusivity and accessibility is a core part of our school's ethos. We will continue to invest in our facilities and curriculum, and provide targeted support services to ensure that all children can achieve their full potential. We are proud of the progress we have made and look forward to continuing to support all children in the future.

Q. How can we effectively address the needs of our community? C. We can address the needs of our community by providing support and resources to those in need. S. a. We believe...

Q. How can we effectively address the needs of our community? D. We can address the needs of our community by providing support and resources to those in need. S. We believe...

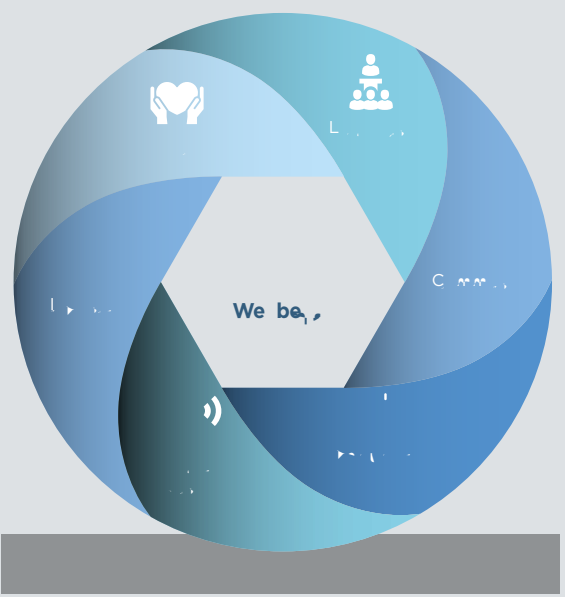
L. We believe...

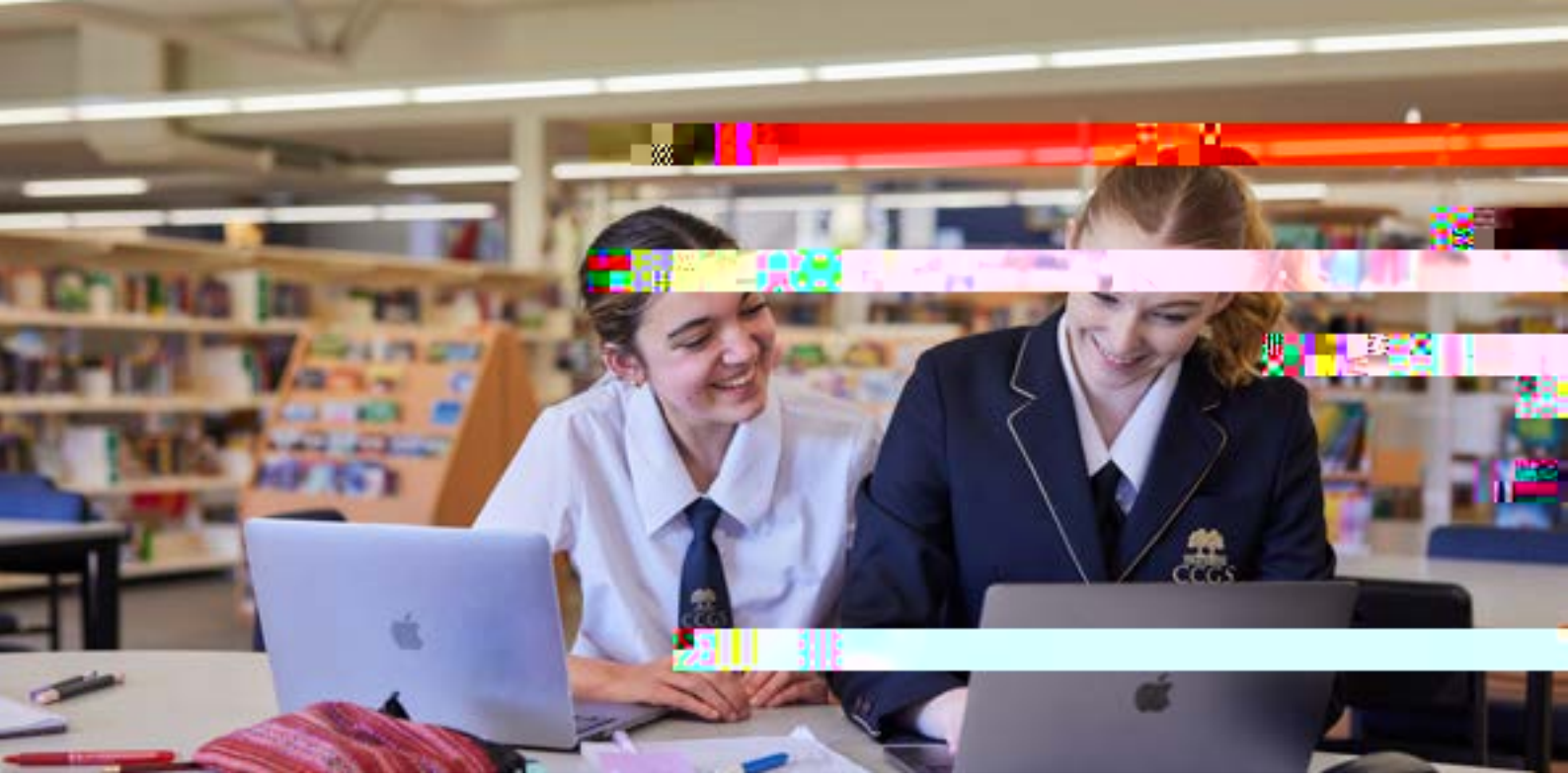
NEXT STEPS

M. We believe...

A. We believe...

A. P. We believe...





Հայ Երեւոյնի Քոլեջի Արժեքները



Page 1 of 10

M... ..

▶

P... ..

▶

D... ..

▶

▶

▶

▶

▶

▶

M... ..

CCG... ..

▶

▶

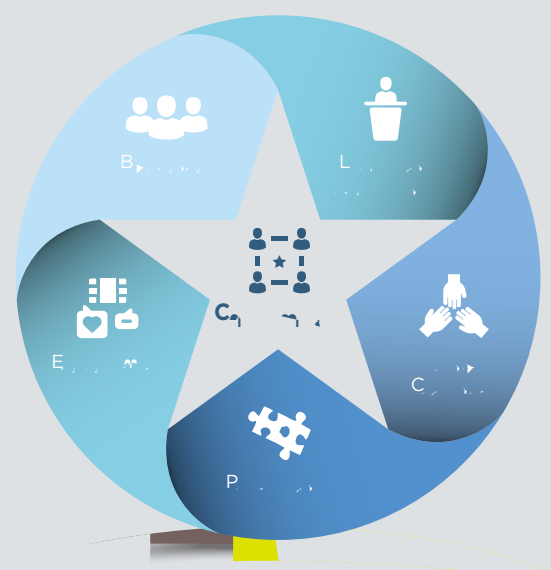
1. **Plan** – Determine what you want to achieve and how you will get there.

NEXT STEPS

2. **Prepare** – Establish a team and assign roles.

3. **Execute** – Carry out the plan and monitor progress.

4. **Evaluate** – Review the results and make adjustments.





Peer-to-Peer Learning

Exercise Procedure

1. Obtain a copy of the M-CCG form.
2. Fill out the form.

